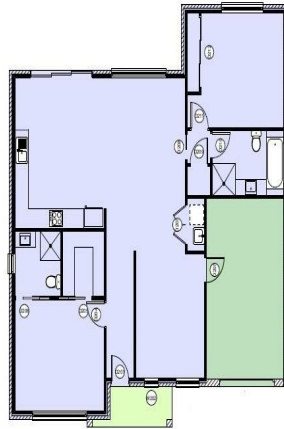


Dwelling 2 Lily Pl, Orange, NSW 2800

\$399,000

Villa 2 2 1



FLOOR PLAN - D2.
1:100 at A3

AREASCHEDULE	
LIVING	111.15 m ²
GARAGE	20.89 m ²
PORCH	3.55 m ²
TOTAL AREA	135.59m² (14.55sq)

BUILDING COMMENCED - ONLY ONE REMAINING

This brand new two-bedroom villa should be completed and ready for you by the middle of 2018. The master bedroom has both ensuite and WIR, and the second bedroom has a BIR and is close to the main bathroom, which comes with separate bath and shower. This villa will include blinds, dishwasher, fixed floor coverings, insect screens, light fittings, rangehood, stove, TV antenna and landscaping. There is also internal access from the single lock up garage. Don't forget: if you are a first home owner, then government incentives apply. Alternatively, this could be a great investment opportunity. People are starting to buy off the plan, so don't delay and call me for further information.

Open for Inspection
By Appointment.

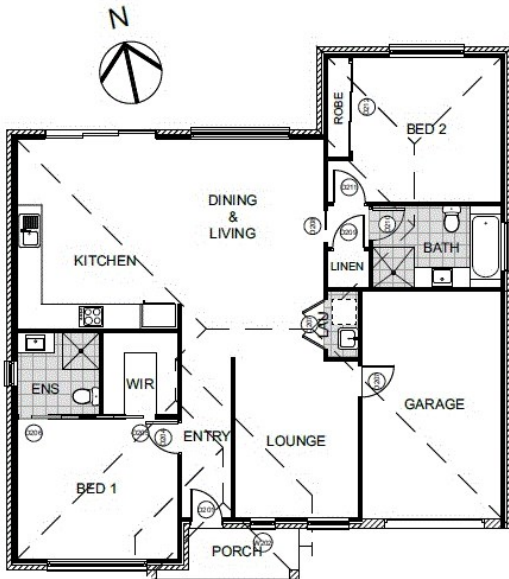
Listed By



Chris Tyack
Phone: (02) 63621233
Mobile: 0438258590



Floorplan



AREA SCHEDULE	
LIVING	111.15 m ²
GARAGE	20.69 m ²
PORCH	3.55 m ²
TOTAL AREA	135.39m² - (14.55sq)

FLOOR PLAN - D2.
1:100 at A3